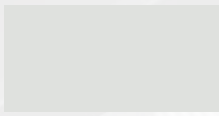




Metal Roofing Supply

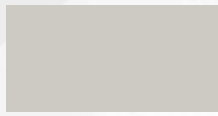
STANDARD COLOR OFFERINGS



Arctic White
SR .69 SRI 84



Polar White
SR .64 SRI 77



Bone White
SR .61 SRI 72



Ivory
SR .69 SRI 84



Light Stone
SR .56 SRI 65



Saddle Tan
SR .47 SRI 53



Desert Sand
SR .42 SRI 47



Taupe
SR .38 SRI 41



Buckskin
SR .33 SRI 34



Burnished Slate
SR .34 SRI 35



Antique Bronze
SR .24 SRI 22



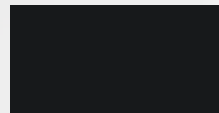
Light Brown
SR .38 SRI 41



Koko Brown
SR .35 SRI 37



Brown
SR .33 SRI 34



Black
SR .31 SRI 31



Ash Gray
SR .46 SRI 52



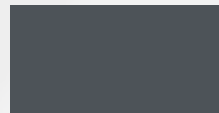
Old Town Gray
SR .41 SRI 45



Charcoal Gray
SR .37 SRI 31



Charcoal Gray II
SR .35 SRI 37



Charcoal Blue Gray
SR .29 SRI 29



Rustic Red
SR .36 SRI 38



Rural Red
SR .34 SRI 35



Dark Red
SR .36 SRI 39



Crimson Red
SR .31 SRI 31



Berry
SR .29 SRI 29



Evergreen
SR .35 SRI 37



Ivy Green
SR .28 SRI 27



Fern Green
SR .29 SRI 29



Colony Green
SR .28 SRI 27



Hawaiian Blue
SR .31 SRI 31



Gallery Blue
SR .26 SRI 24



Matte Black
SR .26 SRI 25



Charcoal Gray CRINKLE
SR .33 SRI 35



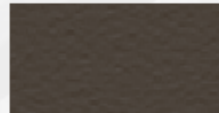
Black CRINKLE
SR .29 SRI 29



Evergreen CRINKLE
SR .33 SRI 35



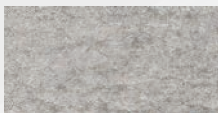
Rustic Red CRINKLE
SR .32 SRI 33



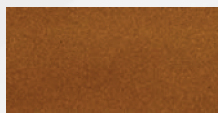
Burnished Slate CRINKLE
SR .30 SRI 31



Koko Brown CRINKLE
SR .33 SRI 34



Acrylic GALVALUME®
N/A



Copper Metallic
SR .51 SRI 58



STEEL PRODUCTS FOR THE METAL ROOFING AND METAL BUILDING INDUSTRY

- > Final color selection should be made from actual color chips.
- > For the most current information, visit unitedsteelsupply.com.
- > A 40-year limited paint warranty is available for all colors upon written request. Please inquire. (*Outside the continental United States, please inquire.*)
- > Solar Reflectivity (SR): Solar reflectivity or reflectance is the measure of a material's ability to reflect solar energy or sunlight from its surface. SR values are numbered 0 to 1.0. A value of 0 indicates that the surface absorbs all solar energy and a value of 1.0 indicates total reflectance.
- > Solar Reflectance Index (SRI): The SRI is used to determine compliance with LEED requirements and is calculated according to ASTM E 1980 using values for reflectance and emissivity. To meet LEED requirements, a roofing material must have an SRI of 29 or greater for steep slope roofing and an SRI value of 78 or higher for low slope roofing. For more information, visit usgbc.org.

SHERWIN-WILLIAMS.
Coil Coatings

Sherwin-Williams® is a trademark of SWIMC LLC.

Standard Color Offerings

Color Name	29ga 40.8750 GR80 AZ50	26ga 41.5625 GR80 AZ50	26ga 41.5625 GR50 AZ50	26ga 20-20.5 GR50 AZ50	26ga 43.0000 GR80 AZ50
Acrylic GALVALUME®	●	●	●	○	●
Antique Bronze	●	□	□	□	□
Arctic White	●	□	●	○	●
Ash Gray	●	●	●	○	●
Burnished Slate	●	●	●	○	●
Berry	●	●	●	○	●
Black	●	●	●	○	●
Bone White	●	●	●	○	●
Brown	●	●	●	○	●
Buckskin	●	□	□	□	□
Charcoal Gray	●	●	●	○	●
Charcoal Gray II	●	□	●	○	●
Charcoal Blue Gray	●	□	●	○	●
Colony Green	●	□	●	○	●
Copper Metallic	●	●	●	○	●
Crimson Red	●	●	●	○	●
Dark Red	●	□	□	□	□
Desert Sand	●	●	●	○	●
Evergreen	●	●	●	○	●
Fern Green	●	●	●	○	●
Gallery Blue	●	●	●	○	●
Hawaiian Blue	●	●	●	○	●
Ivory	●	●	●	○	●
Ivy Green	●	□	●	○	●
Koko Brown	●	●	●	○	●
Light Brown	●	●	●	○	□
Light Stone	●	●	●	○	●
Matte Black	●	□	●	○	●
Old Town Gray	●	●	●	○	●
Polar White	●	●	●	○	●
Rural Red	●	●	●	○	●
Rustic Red	●	●	●	○	●
Saddle Tan	●	●	●	○	●
Taupe	●	●	●	○	●
Black CRINKLE	●	□	●	○	□
Burnished Slate CRINKLE	●	□	●	○	□
Charcoal Gray CRINKLE	●	□	●	○	□
Evergreen CRINKLE	●	□	□	○	□
Koko Brown CRINKLE	●	□	●	○	□
Rustic Red CRINKLE	●	□	□	○	□

● = Stock Color/Width ○ = Stock Color, 1-3 day slitting lead time □ = Paint-to-order, minimum required